



Wenlock Gardens | Bloxwich, Walsall | WS3 1TA

£1,100 PCM

 **Webbs**
estate agents

Summary

Webbs Estate Agents are pleased to offer to let this well-presented two-bedroom semi-detached home, situated in the sought-after residential area of Wenlock Gardens. This home is ideally located close to local amenities, reputable schools, and transport links.

The property boasts a modern fitted kitchen and a spacious lounge, featuring patio doors that open out to a private garden - ideal for both relaxing and entertaining. A convenient downstairs WC and under stairs storage completes the ground floor layout.

Upstairs, the property offers two generously sized double bedrooms and a contemporary family bathroom. To the side of the property, there is a driveway providing off-road parking, making it a perfect choice for professionals, couples, or small families looking for comfortable and stylish living.

Key Features

Rooms and Dimensions

PROPERTY DETAILS

Hallway

6'2" x 7'9" (1.89 x 2.37)

WC

4'9" x 3'2" (1.47 x 0.97)

Storage

2'6" x 4'6" (0.78 x 1.38)

Kitchen

6'2" x 12'5" (1.89 x 3.80)

Lounge

14'4" x 12'5" (4.38 x 3.81)

Landing

5'1" x 4'8" (1.56 x 1.44)

Bathroom

7'10" x 5'5" (2.39 x 1.67)

Bedroom

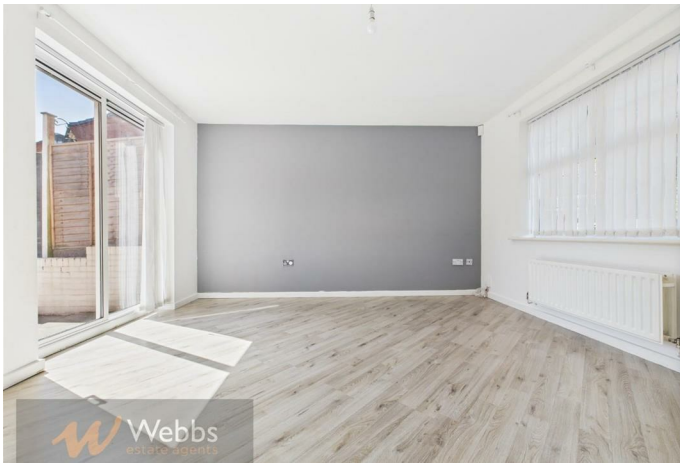
9'3" x 12'5" (2.83 x 3.80)

Bedroom

12'5" x 8'5" (3.81 x 2.59)

TENANCY INFORMATION & IMPORTANT NOTES







Webbs Estate Agents - endeavour to maintain accurate depictions of properties in Virtual Tours, Floor Plans and descriptions, however, these are intended only as a guide and purchasers must satisfy themselves by personal inspection.

